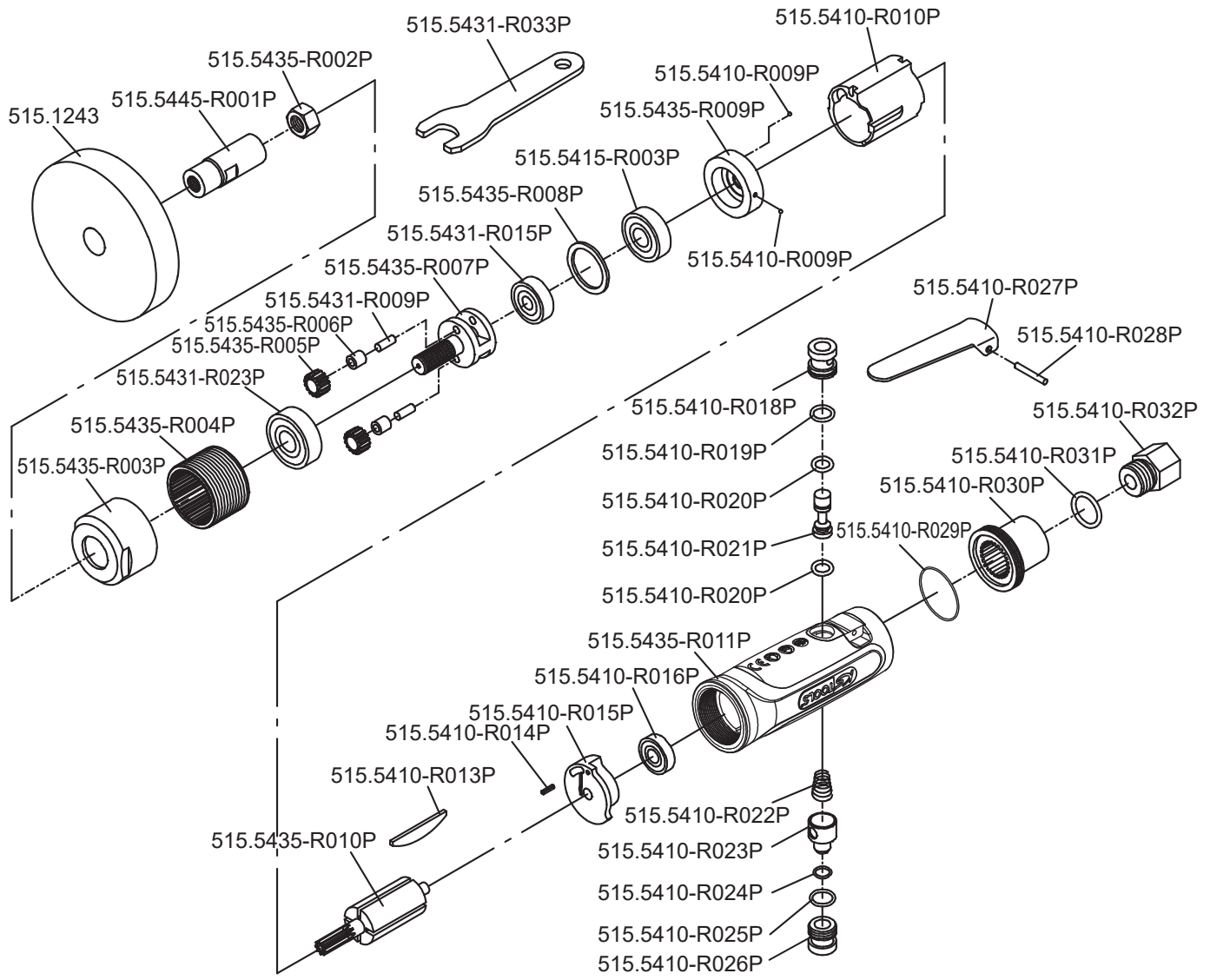


Art. 515.5445



**Art. 515.5445**

Art.-Nr.	Description	Beschreibung	Menge Qty.
515.5410-R009P	Steel ball	Stahlkugel	2
515.5410-R010P	Cylinder	Zylinder	1
515.5410-R013P	Rotor blade	Rotorblatt	5
515.5410-R014P	Spring pin	Splint	1
515.5410-R015P	Rear end plate	Hintere Kugellageraufnahme	1
515.5410-R016P	Ball bearing	Kugellager	1
515.5410-R018P	Throttle valve bushing	Drosselventil Buchse	1
515.5410-R019P	O-ring	O-Ring	1
515.5410-R020P	O-ring	O-Ring	2
515.5410-R021P	Throttle valve	Drosselventil	1
515.5410-R022P	Throttle valve spring	Drosselventilfeder	1
515.5410-R023P	Air regulator	Druckluftregulierung	1
515.5410-R024P	O-ring	O-Ring	1
515.5410-R025P	O-ring	O-Ring	1
515.5410-R026P	Valve screw	Ventilschraube	1
515.5410-R027P	Throttle lever	Betätigungshebel	1
515.5410-R028P	Throttle lever pin	Betätigungshebelsplint	1
515.5410-R029P	O-ring	O-Ring	1
515.5410-R030P	Exhaust deflector	Abluftdeflektor	1

Art.-Nr.	Description	Beschreibung	Menge Qty.
515.5410-R031P	O-ring	O-Ring	1
515.5410-R032P	Air inlet	Lufteinlassschraube	1
515.5415-R003P	Ball bearing	Kugellager	1
515.5431-R009P	Planet pin	Pin für Zahnrad	2
515.5431-R015P	Ball bearing	Kugellager	1
515.5431-R023P	Ball bearing	Kugellager	1
515.5431-R033P	Spanner	Schraubenschlüssel	1
515.5435-R002P	Spindle	Spindel	1
515.5435-R003P	Clamp nut	Gehäuseverschraubung	1
515.5435-R004P	Internal gear	Getriebering Innenverzahnt	1
515.5435-R005P	Planet gear	Zahnrad für Planetengetriebe	2
515.5435-R006P	Bushing	Buchse	2
515.5435-R007P	Planet gear cage	Gehäuse für Planetengetriebe	1
515.5435-R008P	Washer	Unterlegscheibe	1
515.5435-R009P	End plate	Endplatte	1
515.5435-R010P	Rotor	Rotor	1
515.5435-R011P	Motor housing	Antriebsgehäuse	1
515.5445-R001P	Spindle	Spindel	1