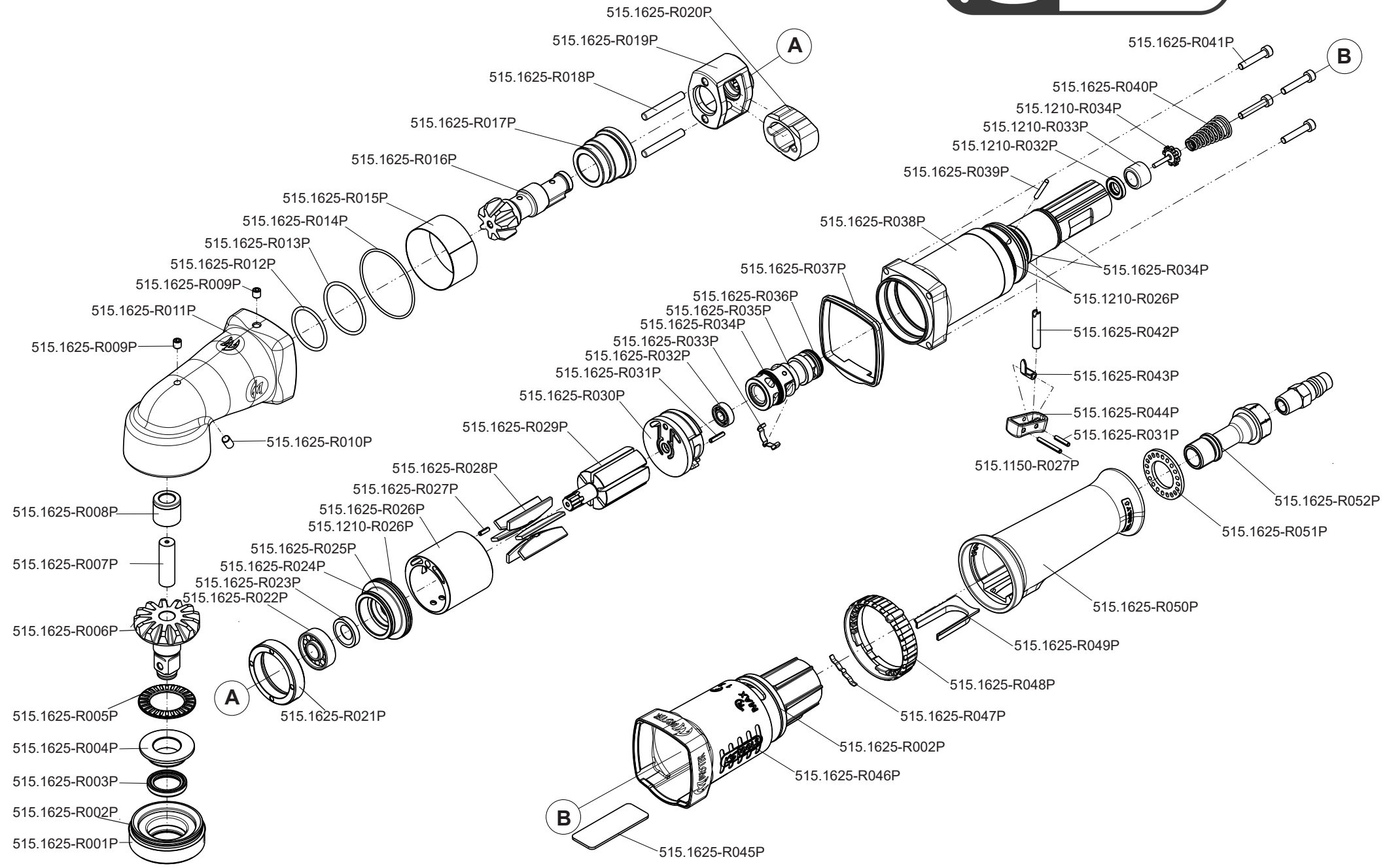


Art. 515.1625



Art. 515.1625

Art.-Nr.	Description	Beschreibung	Menge Qty.
515.1150-R027P	Splint	Spring pin	1
515.1210-R026P	O-Ring f. Umschalter	O-Ring	3
515.1210-R032P	Dichtungsring	Seal	1
515.1210-R033P	Hülse	Insert bushing	1
515.1210-R034P	Druckventil	Tip valve	1
515.1625-R001P	Housing cover	Gehäuseverschlussplatte	1
515.1625-R002P	O-Ring	O-Ring	2
515.1625-R003P	Oil seal	Öldichtung	1
515.1625-R004P	Latch spring bushing	Klinkenfederbuchse	1
515.1625-R005P	Needle bearing	Nadellager	1
515.1625-R006P	Drive head	Antriebsvierkant	1
515.1625-R007P	Gear pin	Zahnradpin	1
515.1625-R008P	Bushing	Buchse	1
515.1625-R009P	Setscrew	Madenschraube	2
515.1625-R010P	Setscrew	Madenschraube	1
515.1625-R011P	Angle housing	Winkelgehäuse	1
515.1625-R012P	O-Ring	O-Ring	1
515.1625-R013P	O-Ring	O-Ring	1
515.1625-R014P	O-Ring	O-Ring	1
515.1625-R015P	Steel ring	Stahlring	1
515.1625-R016P	Gear	Zahnrad	1
515.1625-R017P	Gear gasket	Zahnrad Dichtung	1
515.1625-R018P	Locking pin	Arretierungsstift	2
515.1625-R019P	Hammer frame	Hammerkäfig	1
515.1625-R020P	Hammer	Hammer	1
515.1625-R021P	Cylinder spacer ring	Zylinder Distanzring	1
515.1625-R022P	Bearing	Kugellager	1
515.1625-R023P	Oil seal	Öldichtung	1
515.1625-R024P	O-Ring	O-Ring	1

Art.-Nr.	Description	Beschreibung	Menge Qty.
515.1625-R025P	Front sealing plate	Vordere Verschlussplatte	1
515.1625-R026P	Cylinder	Zylinder	1
515.1625-R027P	Spring pin	Splint	1
515.1625-R028P	Rotor blade	Rotorblatt	6
515.1625-R029P	Rotor	Rotor	1
515.1625-R030P	End plate	Abschlussplatte	1
515.1625-R031P	Spring pin	Splint	1
515.1625-R032P	Bearing	Kugellager	1
515.1625-R033P	Spring	Feder	1
515.1625-R034P	O-Ring	O-Ring	3
515.1625-R035P	Reverse valve	Umschaltventil	1
515.1625-R036P	O-Ring	O-Ring	1
515.1625-R037P	Washer	Dichtung	1
515.1625-R038P	Housing	Gehäuse	1
515.1625-R039P	Pin	Pin	1
515.1625-R040P	Spring	Feder	1
515.1625-R041P	Thread bolt	Gewindebolzen	4
515.1625-R042P	Valve stem	Ventilstift	1
515.1625-R043P	Spring	Feder	1
515.1625-R044P	Operating switch	Betriebsschalter	1
515.1625-R045P	Washer	Dichtung	1
515.1625-R046P	Plastic housing	Kunststoffgehäuse	1
515.1625-R047P	Spring	Feder	1
515.1625-R048P	Reverse ring	Umschaltring	1
515.1625-R049P	Cylinder seal	Zylinderdichtung	1
515.1625-R050P	Handle grip	Griffgummierung	1
515.1625-R051P	Deflector	Ableiter	1
515.1625-R052P	Air inlet	Lufteinlass	1