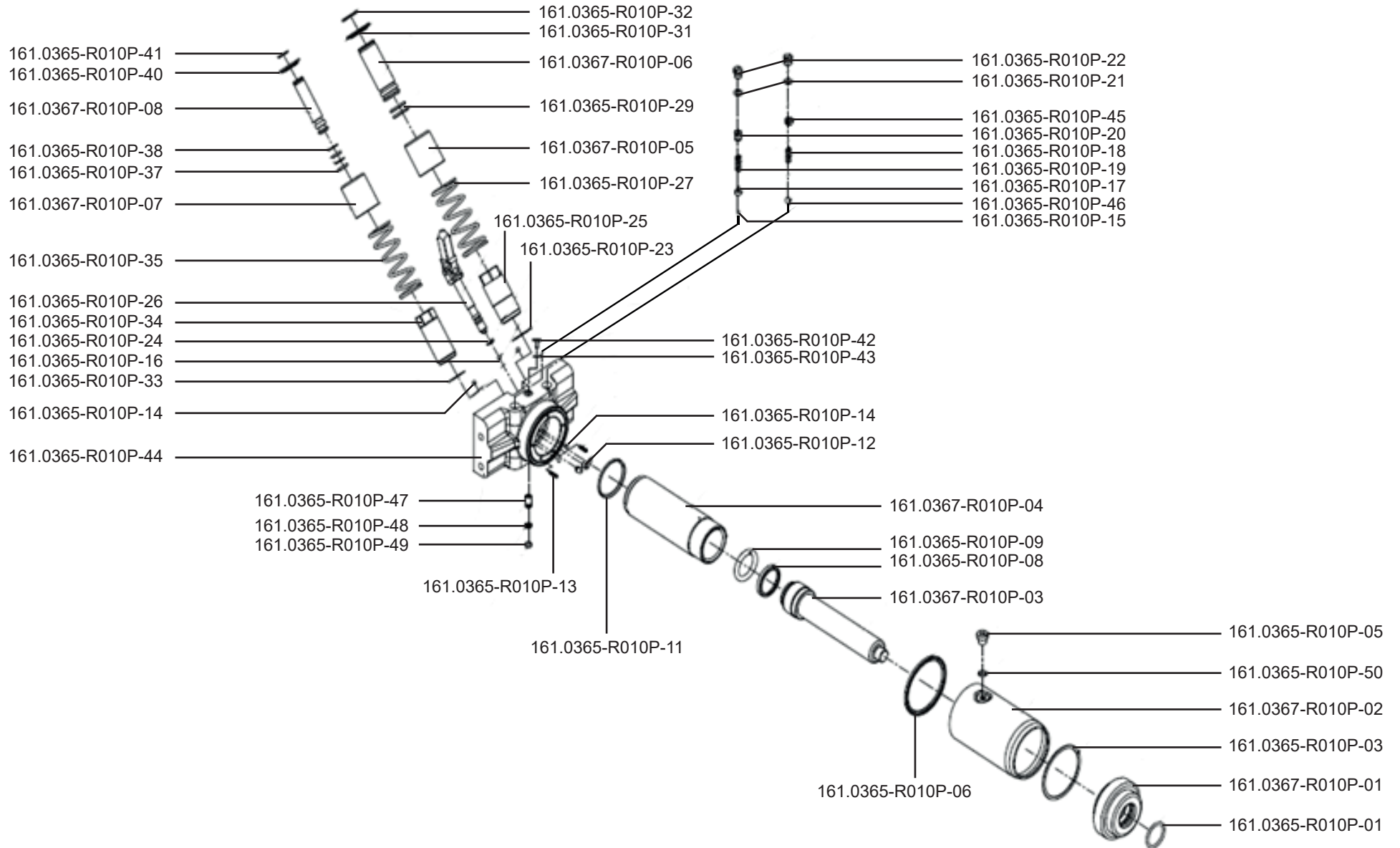


Art. 161.0367-R010P



**Art. 161.0367-R010P**

Art.-Nr.	Description	Beschreibung	Menge Qty.
161.0365-R010P-01	O-Ring	O-Ring	1
161.0365-R010P-03	Washer	Dichtungsring	1
161.0365-R010P-05	Screw	Schraube	1
161.0365-R010P-06	Nylon washer	Nylon Dichtring	1
161.0365-R010P-08	Washer	Unterlegscheibe	1
161.0365-R010P-09	O-Ring	O-Ring	1
161.0365-R010P-11	Washer	Dichtungsring	1
161.0365-R010P-12	Reflux valve	Rücklaufventil	2
161.0365-R010P-13	Filter	Filter	2
161.0365-R010P-14	Steel ball	Stahlkugel	4
161.0365-R010P-15	Steel ball	Stahlkugel	1
161.0365-R010P-16	Steel ball	Stahlkugel	1
161.0365-R010P-17	Steel ball base	Stahlkugelhalterung	1
161.0365-R010P-18	Spring	Feder	1
161.0365-R010P-19	Spring	Feder	1
161.0365-R010P-20	Screw	Schraube	1
161.0365-R010P-21	O-Ring	O-Ring	2
161.0365-R010P-22	Screw	Schraube	2
161.0365-R010P-23	Copper washer	Kupferunterlegscheibe	1
161.0365-R010P-24	O-Ring	O-Ring	1
161.0365-R010P-25	Pump core base	Pumpkolbenführung	1
161.0365-R010P-26	Release valve	Ablassventil	1
161.0365-R010P-27	Pistonspring	Kolbenfeder	1
161.0365-R010P-29	O-Ring	O-Ring	2
161.0365-R010P-31	Spring base	Federhalterung	1

Art.-Nr.	Description	Beschreibung	Menge Qty.
161.0365-R010P-32	Retainer ring	Sprengring	1
161.0365-R010P-33	Copper washer	Kupferunterlegscheibe	1
161.0365-R010P-34	Pump core base	Pumpkolbenführung	1
161.0365-R010P-35	Spring	Kolbenfeder	1
161.0365-R010P-37	O-Ring	O-Ring	2
161.0365-R010P-38	Nylon washer	Nylon Dichtring	2
161.0365-R010P-40	Spring retainer	Federhalterung	1
161.0365-R010P-41	Retainer ring	Sprengring	1
161.0365-R010P-42	Screw	Schraube	1
161.0365-R010P-43	O-Ring	O-Ring	1
161.0365-R010P-44	Hydraulic housing	Hydraulikgehäuse	1
161.0365-R010P-45	Screw	Schraube	1
161.0365-R010P-46	Steel ball	Stahlkugel	1
161.0365-R010P-47	Valve	Ventil	1
161.0365-R010P-48	Filter	Filter	1
161.0365-R010P-49	Screw	Schraube	1
161.0365-R010P-50	O-Ring	O-Ring	1
161.0367-R010P-01	Housing ring	Gehäusering	1
161.0367-R010P-02	Cover	Abdeckung	1
161.0367-R010P-03	Piston rod	Kolbenstange	1
161.0367-R010P-04	Piston mounting	Kolbenführung	1
161.0367-R010P-05	Protection sleeve	Schutzhülse	1
161.0367-R010P-06	Pump core	Pumpkolben	1
161.0367-R010P-07	Protection sleeve	Schutzhülse	1
161.0367-R010P-08	Pump core	Pumpkolben	1