

Operator name and signature: Rolf Ugilt *Rolf Ugilt*

Output:	74208 lm
Peak:	26057 cd
Lux@50cm:	104230 Lux
Power:	619,3 W
Power Factor / DF ϕ 1:	1,0
Standby power	0,50 W

Light efficacy:

120 Lumen/Watt

Light quality:

CRI: 83,2

Color temperature:

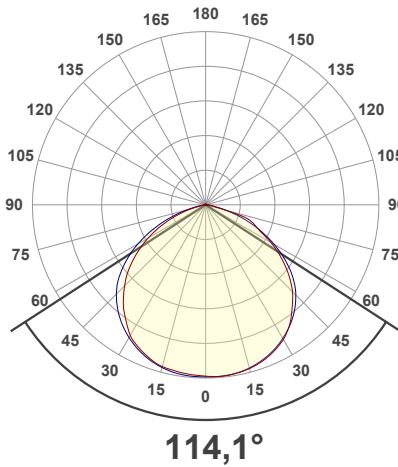
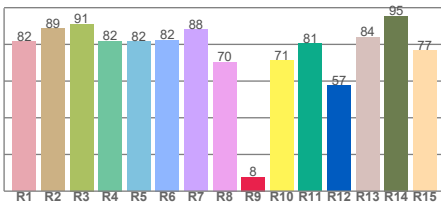
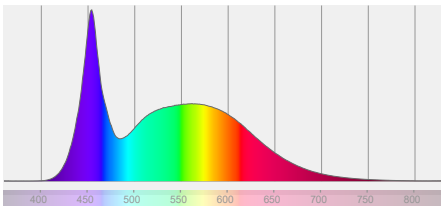
6982 K



According to regulation (EU) 2019/2015

Directionality:	Directional
Useful Lumen:	61590 lm
Energy Class:	E
η TM - Efficacy	117 lm/W

Spectra



Product name:

SITE LIGHT 60 80k Lumen

Item number:

03.5269

Date and time:

12-03-2021 13:56:18

Description:

Standby Power [W]: 0,50

Sensor distance: 350 cm

Warmup: <2% in 15 minutes

Power Supply: 230Vac

BEAM DETAILS

Beam distance: 322,6 meters

Distance (meter)

1 m

2 m

3 m

4 m

5 m

Distance (feet)

3,3 ft

6,6 ft

9,8 ft

13,1 ft

16,4 ft

Lux*

114,1°

26016 lx

6504 lx

2891 lx

1626 lx

1041 lx

Footcandles*

2417 fcd

604 fcd

269 fcd

151 fcd

97 fcd

*measured at center of beam

Beam width (meter)

3,1 m

6,2 m

9,3 m

12,3 m

15,4 m

Beam width (feet)

10,2 ft

20,4 ft

30,2 ft

40,4 ft

50,6 ft

Beam intensities from 1-20m

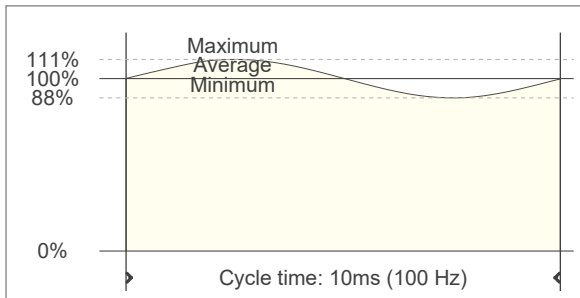
1m	2m	3m	4m	5m	6m	7m	8m	9m	10m	11m	12m	13m	14m	15m	16m	17m	18m	19m	20m
3,3ft	6,6ft	9,8ft	13,1ft	16,4ft	19,7ft	23ft	26,2ft	29,5ft	32,8ft	36,1ft	39,4ft	42,7ft	45,9ft	49,2ft	52,5ft	55,8ft	59,1ft	62,3ft	65,6ft
26016lx	6504lx	2891lx	1626lx	1041lx	723lx	531lx	407lx	321lx	260lx	215lx	181lx	154lx	133lx	116lx	102lx	90lx	80lx	72lx	65lx
2417fcd	604,2fc	268,6fc	151,1fc	96,7fcd	67,1fcd	49,3fcd	37,8fcd	29,8fcd	24,2fcd	20fcd	16,8fcd	14,3fcd	12,3fcd	10,7fcd	9,4fcd	8,4fcd	7,5fcd	6,7fcd	6fcd

FLICKER DETAILS

Flicker curve (complete sampled flicker signal)



Flicker frame (frame of one flicker period)



Flicker frequency:	100 Hz
Flicker index:	0,03
Flicker percentage:	11,23 %
SVM: (Visual flicker)	0,43
Pst LM:	0,09
SDCM	n/a
Rated Color Temperature	6982 K
Duv	0,0006

WARMUP DETAILS according to EN 13032-1

